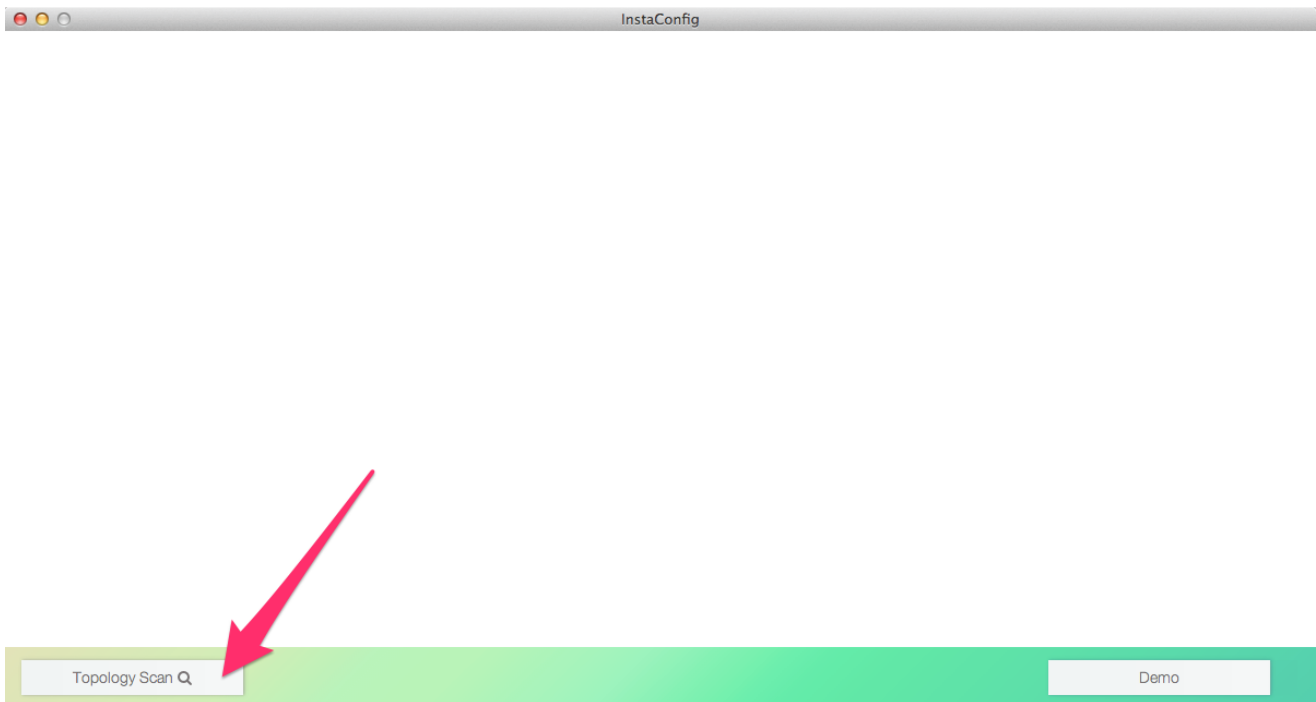
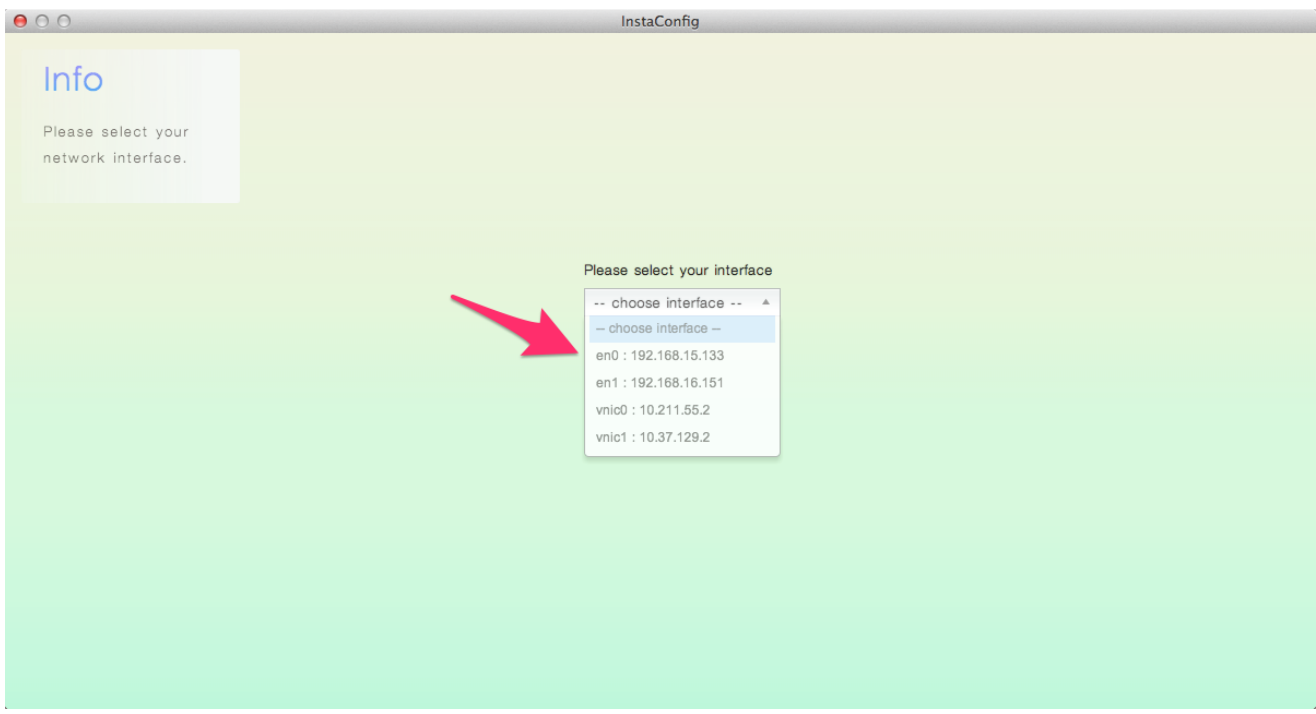


# — Step-by-Step —

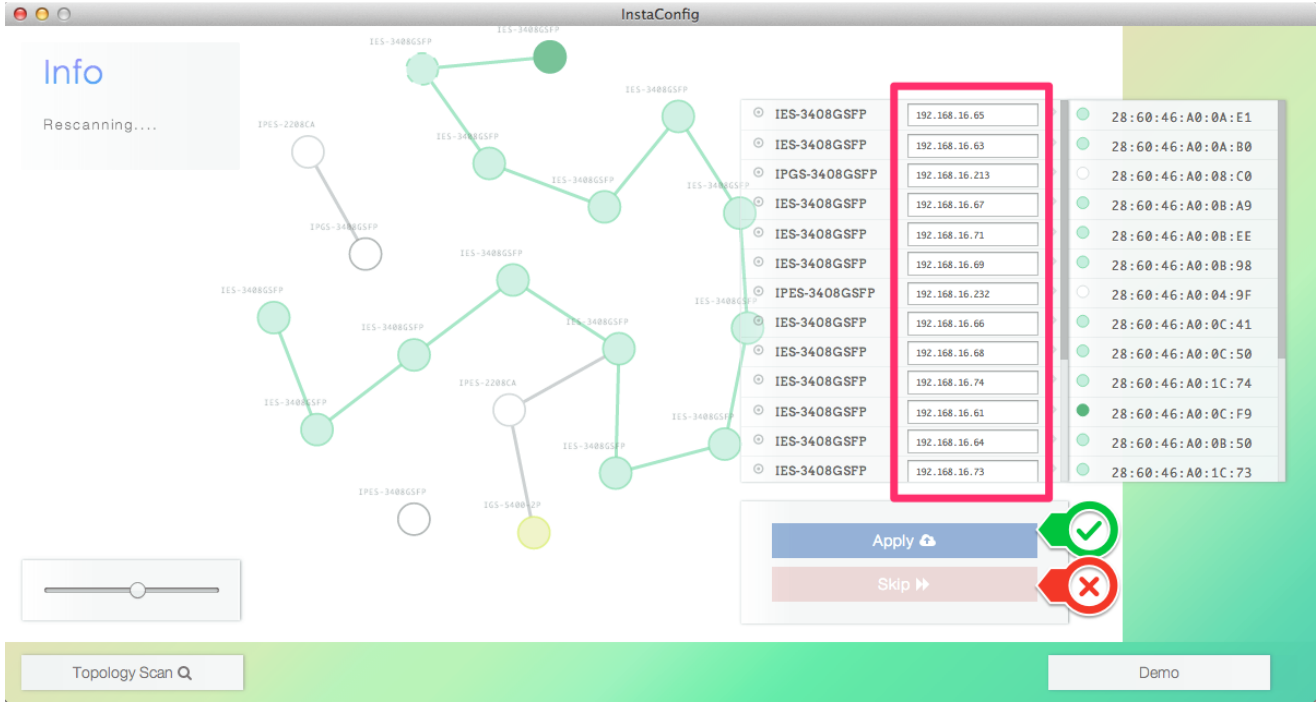
1. Click **Topology Scan** on the left corner.



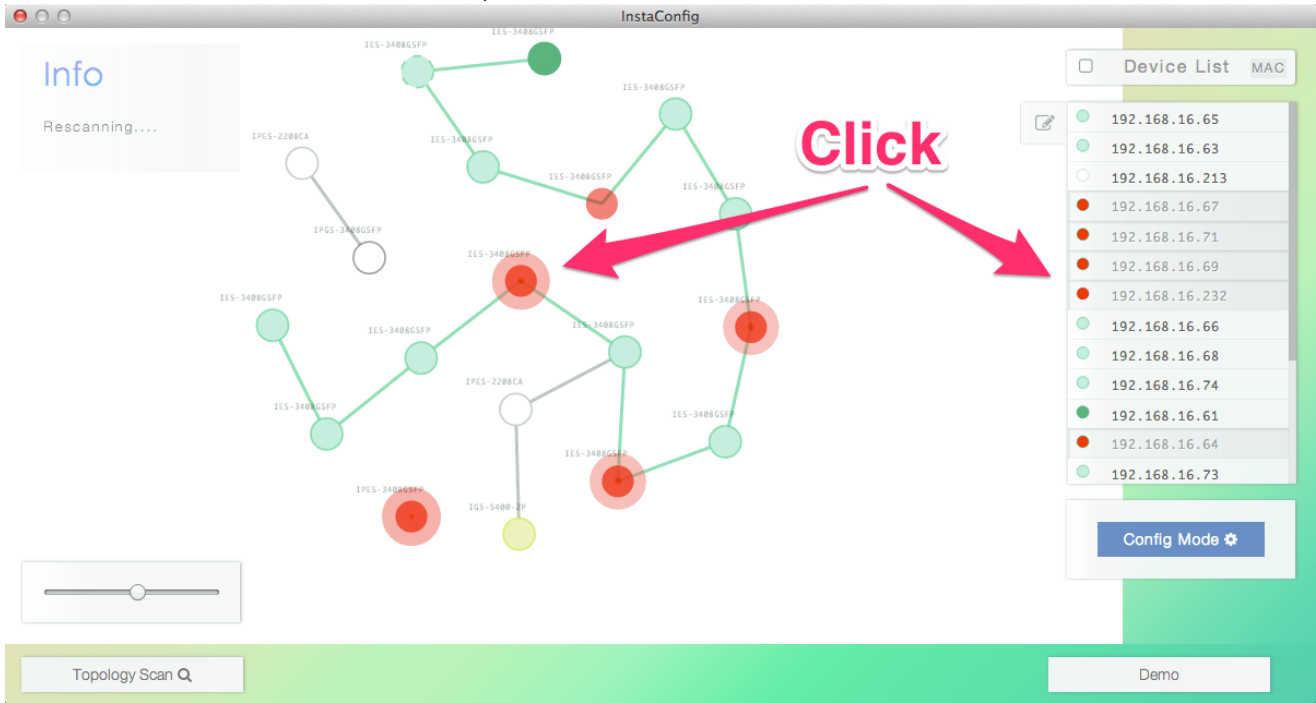
2. (Optional: The selection only appear when there are two or more network interfaces existing on your machine.) Chose the **network interface** connected to your switches.dd



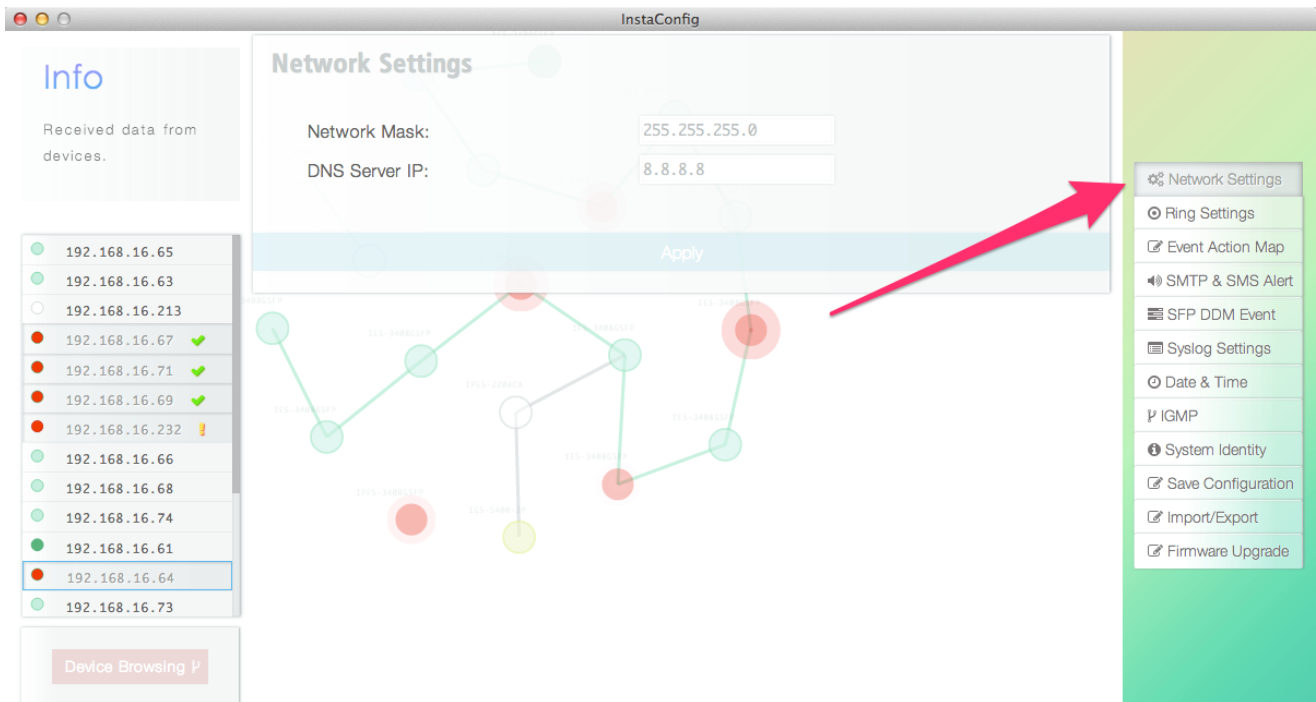
3. Change **IP addresses** for your switches **or** skip this step.



4. Click the circles on the left-side of the window **or** the switch in the device list (right-side) to determine which switch should be setup in next step and hit the **Config Mode** button to enter make adjustments to switches.



5. Click the menu on the right side to chose which configurations should be adjusted.



6. Make sure to click the **Apply** button **after** you adjust the configurations.

